

## Grizzly Flats CSD Newsletter December 2015



# Happy Holidays!



### WATER SUPPLY UPDATE

As of November 2, 2015, the State lifted their curtailments on post-1914 water rights. This allows the District to refill the raw water reservoir, and the level has been coming up. We hope to see the reservoir full and spilling in the next week or so. The curtailments only applied to the District's right to divert water to storage. The District's pre-1914 water rights to use water from our diversions for production were not curtailed, although all water districts in the state MUST meet conservation requirements set by the State Water Resources Control Board.

### CONSERVATION MEASURES STILL IN EFFECT!

Don't forget, GFCSD potable water may only be used for outdoor watering **TWO (2) days** per week. This includes but isn't limited to watering lawns, landscapes, gardens and fruit trees. **Also, please remember that outdoor watering is not allowed within 48 hours of a rain or snow event!**

Homes with addresses ending in an **EVEN** number (0, 2, 4, 6, and 8) shall limit outdoor irrigation to **Wednesdays and Saturdays**.

Homes with addresses ending in an **ODD** number (1, 3, 5, 7 and 9) shall limit outdoor watering to **Thursdays and Sundays**.

**GFCSD is issuing warning letters and fines to customers who are not following these requirements, so please be sure you are aware of your watering days!**

### Conservation Reports

Daily Average Water Production (*in gallons*)

	2013	2015	Water Savings	
June	133,397	92,460	-40,937	-31%
July	171,597	104,623	-66,974	-39%
Aug	135,984	111,042	-24,942	-18%
Sept	135,527	108,087	-27,440	-20%
Oct	106,952	81,861	-25,091	-23%
<b>Totals</b>	<b>683,457</b>	<b>498,073</b>	<b>-185,384</b>	<b>-26%</b>

### GFCSD'S ANNUAL AUDIT IS NOW AVAILABLE ON OUR WEBSITE

We have posted our annual audit and management letter for the year ending June 30, 2015. It can be found on our website ([www.grizzlyflatscsd.com](http://www.grizzlyflatscsd.com)). Go to the "Services" tab, and then click on the "FY 2014-2015" Audit Report to access the file.

### IT IS TIME TO WINTERIZE

When temperatures begin to lower in the fall, it's time to get ready for winter. Every winter season, homeowners in mountain communities are at risk of the damage and expense caused by frozen pipes. **Remember, all water charges due to frozen/broken pipes are the homeowner's responsibility. California law prevents us from making adjustments for these charges.** However, just a few precautions can greatly reduce your risk.

### WINTERIZING TIPS

**DISCONNECT AND DRAIN ALL OUTDOOR HOSES** – Detach hoses from outdoor faucets and drain outdoor systems.

**INSULATE PIPES OR FAUCETS IN UNHEATED AREAS** – If you have pipelines in an unheated garage or cold crawl space under the house, wrap the water pipes.

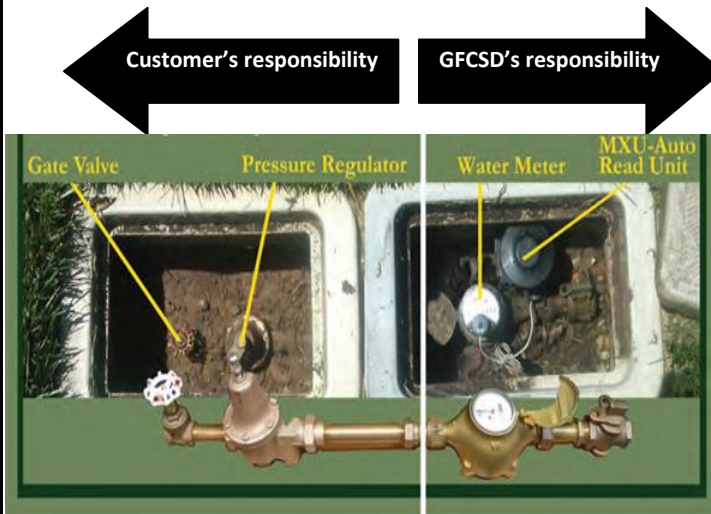
**SEAL OFF ACCESS DOORS, AIR VENTS AND CRACKS** – Winter winds whistling through overlooked openings can quickly freeze exposed water pipes. Just don't block air vents used by your furnace or water heater.

**FIND THE MASTER SHUTOFF** – In case of a leak, everyone in the household needs to know where it is and what it does. It's usually where the water line comes into your house from the street or you can use the "gate valve" in your water meter box.

### ★ WINTERIZE A VACANT HOME

Before vacating your home for the winter, be sure to shut off your water. Most homes in Grizzly Flats have two shut off valves; one on the customer's side in the meter box and one at the home.

If you are going to be away from your home for more than a day or two, both valves should be turned off.



Above is a typical water meter box installation. Not every service looks like this, so please contact us if you need assistance. Do not turn the valves on GFCSD's side of the meter. Only District staff is authorized to do so.

- First, start at your meter box, usually located near the street at one of your property corners. Turn off the gate valve on your side of the meter (see illustration above).
- Second, open your indoor and outdoor faucets until all the water drains out of the pipes. Don't forget to flush your toilets!
- Close the faucets and shut off the valve at the home. This valve is usually located where the water line enters the home. It's best to leave both the meter gate valve and the home shut off valve turned off.

Once all the lines have been drained, it is important to close all household and irrigation lines so when the water is restored, you don't have water pouring out of every faucet or hose! **Also, check with the manufacturer of your hot water heater to see if they have any recommendations for maintaining the equipment while the water service is turned off.**

Some people use antifreeze to help prevent freezing. **Do not use antifreeze made for vehicles; it is extremely toxic!** If you choose to do so, pour **non-toxic RV antifreeze** into all traps and drains, including the dishwasher and showers. Use 2 cups in toilet bowls and tanks, and about 1 cup in other drains.

### ★ WHAT IF IT'S TOO LATE AND YOU WAKE UP TO FIND YOUR PIPES ARE FROZEN?

We recommend that you keep a plumber's number handy in case of an emergency because GFCSD cannot

make those repairs. We also recommend that you have a friend or neighbor check your home if you are not in the area. Keep in mind that maintaining low heat in your home does not ensure that your pipes will not freeze. This is especially true if we experience electrical outages.

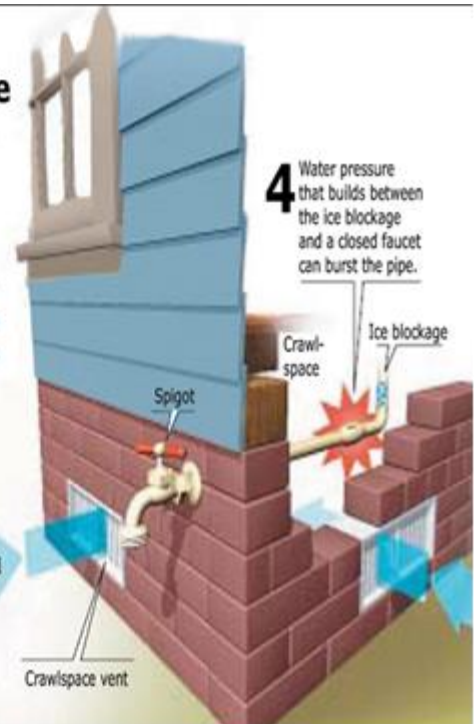
If you think you know where the freeze-up occurred and want to try thawing it yourself, **do not under any circumstances use a torch with an open flame!** The whole house could catch fire. Also, overheating a single spot can burst the pipe. Heating a soldered joint could allow it to leak or come apart.

The easiest tool is a hair dryer with a low heat setting. Wave the warm air back and forth along the pipe, not just on one spot. If you don't have a hair dryer, you can wrap the frozen section with rags and pour hot water over them. It's messy, but it works. Be careful because the pipe may already be broken. It's not leaking because the water is frozen. When you thaw it out, water could come gushing out. Be ready to run for the master shutoff valve if necessary!

### Why frozen water will burst your pipe

Unprotected pipes are susceptible to cold temperatures because water expands when it goes from liquid to solid form.

- 1 A gallon of water, when frozen, will expand to a volume 9% greater than the original gallon.
- 2 Ice blockage becomes more likely when outside temperatures drop to below freezing.
- 3 A cold wind reaching unprotected pipes quickly removes heat and increases the chance of ice formation.



### ★ WATER EMERGENCY?

Keep this number on your fridge or somewhere easily accessible in the event of a water emergency.

**ON-CALL EMERGENCY PAGER NUMBER  
(530) 890-0102**

GFCSD Water Operators are on-call 24 hours per day/7 days a week. There is no fee to use this emergency number! We charge a service fee if we come to your home and an issue is found on your side of the meter. You will be told of any possible charges prior to us responding to your home.